

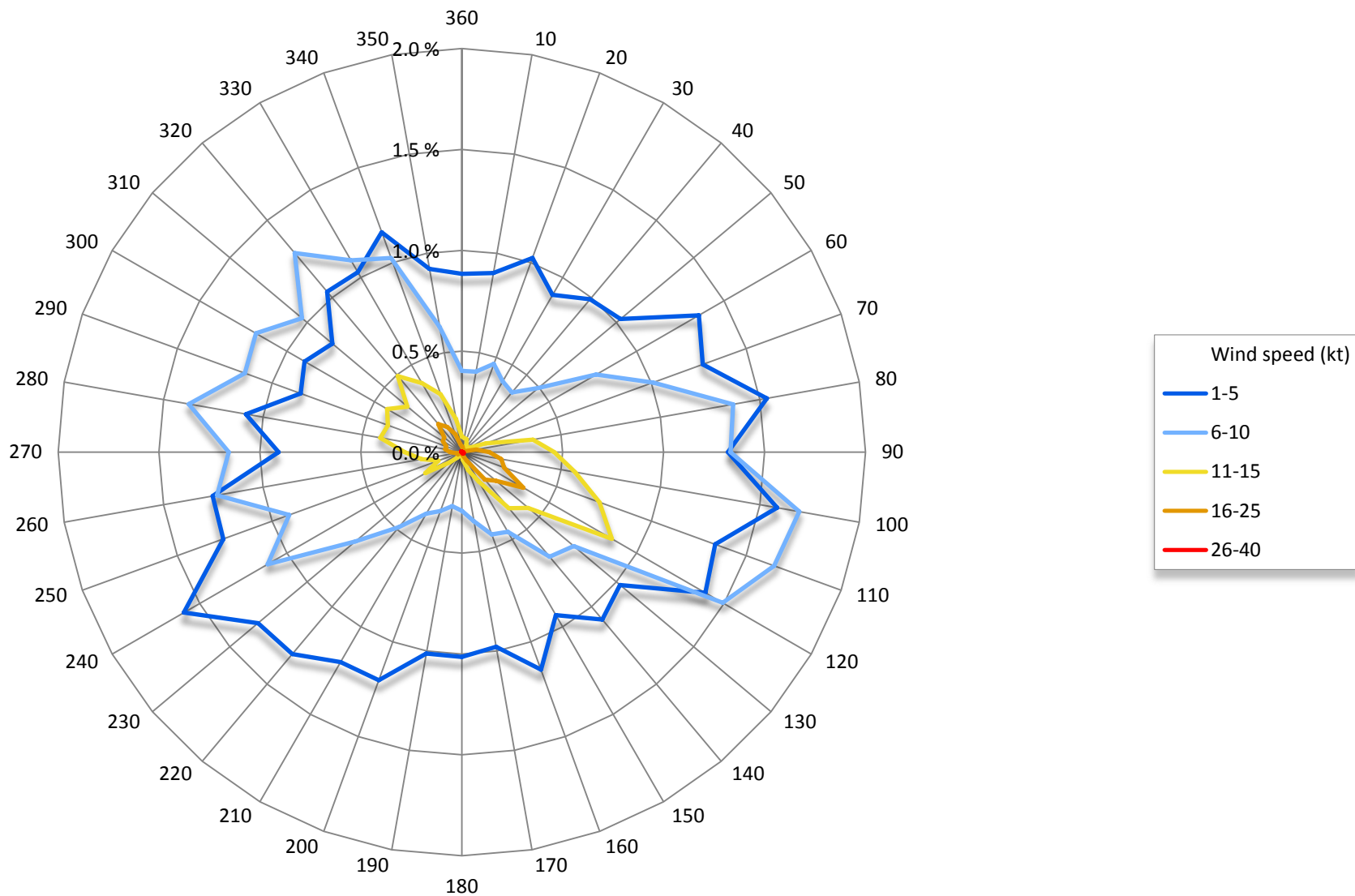
AERODROME CLIMTOLOGICAL SUMMARY

Aerodrome Batajnica, Belgrade, Serbia

LYBT

<i>Parameter</i>	<i>jan</i>	<i>feb</i>	<i>mar</i>	<i>apr</i>	<i>may</i>	<i>jun</i>	<i>jul</i>	<i>aug</i>	<i>sep</i>	<i>oct</i>	<i>nov</i>	<i>dec</i>	<i>year</i>
Average pressure (hPa)	1018.1	1017.8	1015.7	1014.3	1013.7	1014.1	1013.9	1015.4	1016.8	1019.0	1017.4	1020.4	1016.4
Average temperature (°C)	0.6	2.7	7.6	13.2	17.3	21.3	23.1	23.1	18.1	12.3	8.0	2.3	12.5
Average max temperature (°C)	4.2	7.2	13.1	19.2	22.9	27.1	29.5	30.1	24.6	18.5	12.9	5.8	17.9
Total number of days with T > 30°C	0.0	0.0	0.0	0.4	1.5	10.5	15.6	17.3	5.7	0.1	0.0	0.0	51.1
Average min temperature (°C)	-3.0	-1.6	1.8	6.6	11.1	14.9	16.2	15.9	12.0	6.7	3.4	-1.4	6.9
Total number of days with T < 0°C	20.5	14.8	9.3	0.5	0.0	0.0	0.0	0.0	0.0	1.3	5.8	16.8	69.0
Average relative humidity (%)	87.7	81.1	70.1	66.6	71.2	71.7	66.9	64.7	70.0	76.8	81.4	87.9	74.7
Total number of days with rain (> 1 mm)	8.9	9.5	12.3	12.5	15.3	12.8	9.0	6.5	9.5	9.1	9.8	11.2	126.4
Total number of days with snow (> 1 cm)	7.7	5.8	2.5	0.0	0.0	0.0	0.0	0.0	0.0	0.0	0.9	3.9	20.8
Total number of days with thunderstorms	0.0	0.2	0.5	2.0	8.1	8.1	7.0	4.6	2.8	0.9	0.2	0.3	34.7
Total number of days with fog (prevailing visibility < 1000 m)	11.4	5.9	4.3	3.3	4.2	4.8	3.8	5.4	6.3	12.2	10.1	12.1	83.8
Average number of days with wind speed ≥ 30 kt	0.8	1.7	2.8	2.1	1.3	1.7	0.9	0.7	0.8	0.8	1.3	0.9	15.8

Average wind - Year (Jan - Dec)



Calm: 3.8 %
 Variable: 14.4 %

For more details follow the link: <http://www.hidmet.gov.rs/podaci/meteorologija/Klimatografija%20aerodroma%20-%20BATAJNICA.pdf>

Data based on METAR report for LYBT for time period 2008-2019